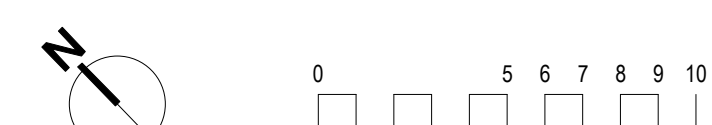
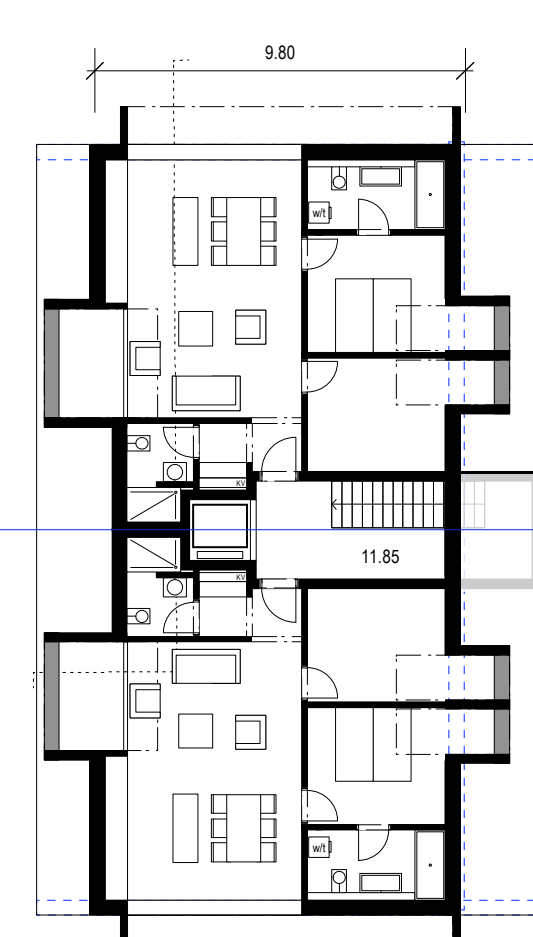
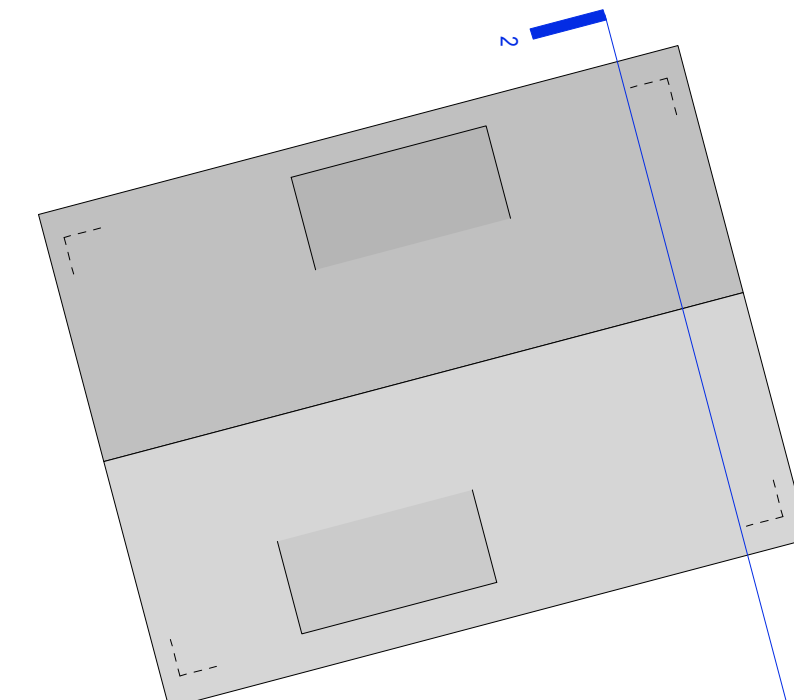
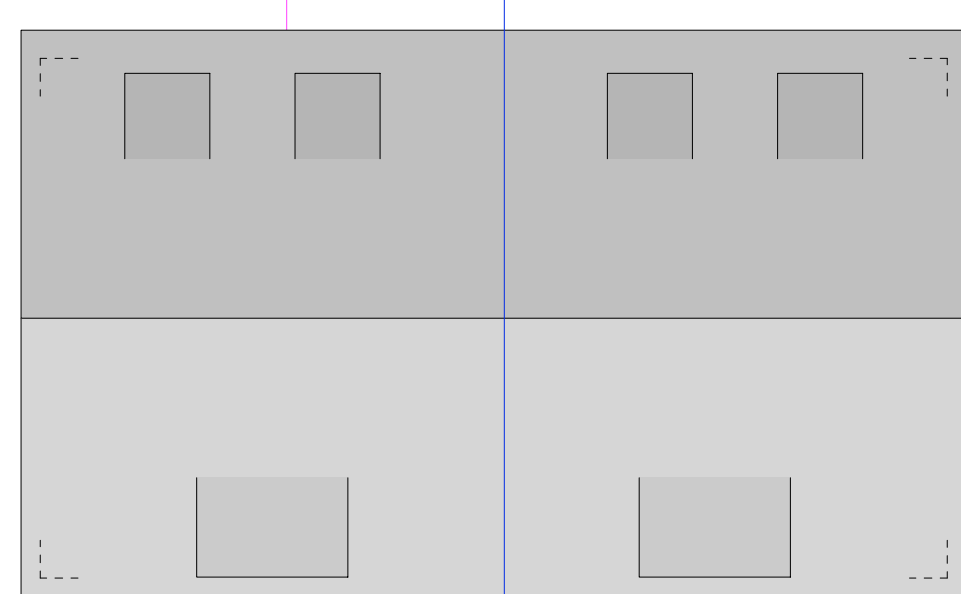
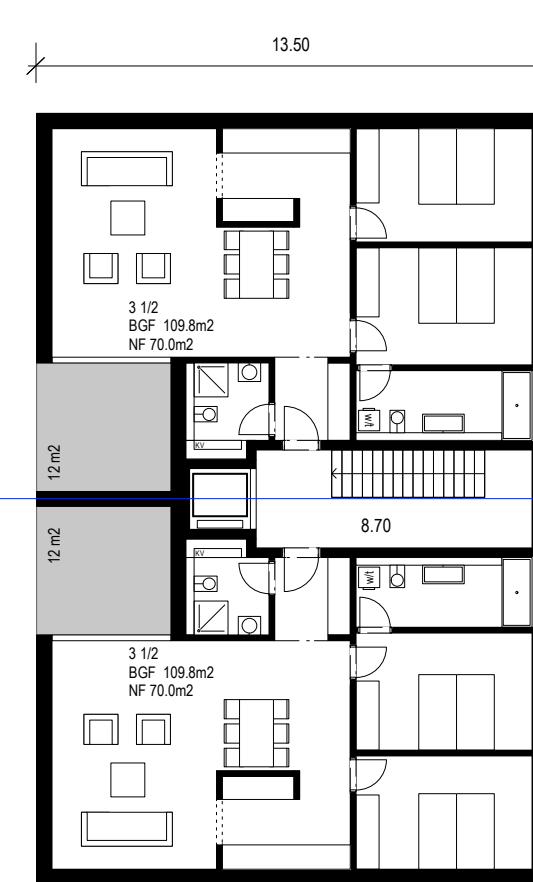
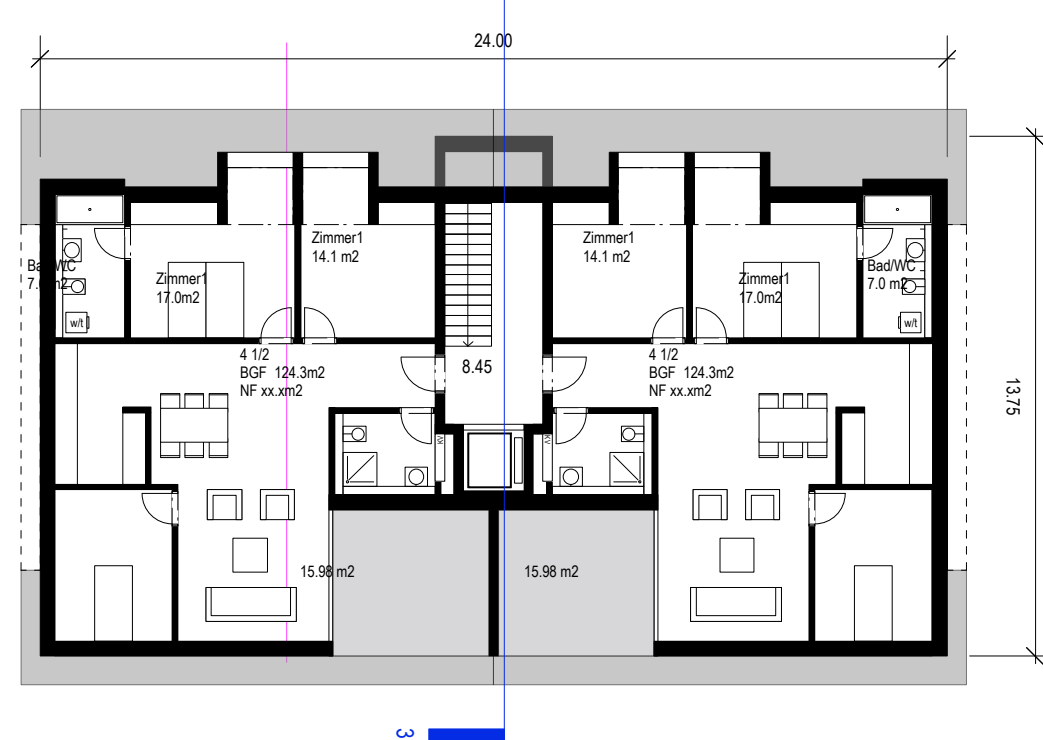
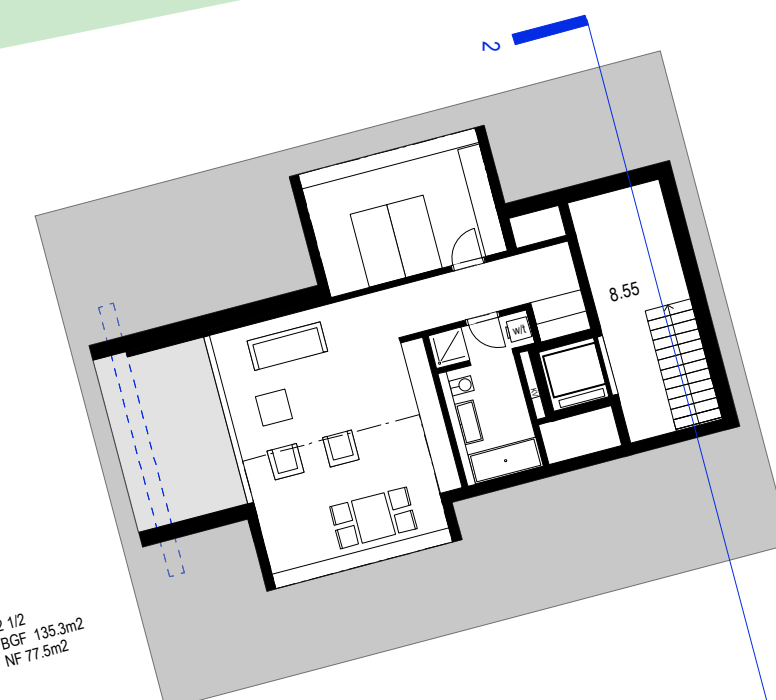



Haus 2  
Ebene -2.78



<b>PROJEKT:</b> MF11 "Algenstadt" Hauptstrasse 8209 Pfaffwiesen			
<b>BAUHERR:</b> Prehm AG Bahnhofplatz 65 8500 Frauenfeld	<b>MASSSTAB:</b> 1: 200	<b>DATUM:</b> 25.03.11	<b>KONTROLLE:</b>  
<b>PHASE:</b> 31 Vorprojekt	<b>FORMAT:</b> A0	<b>FILENAME:</b> 12031-a	<b>PLANNUMMER:</b> 12031-00.00
M.M. Grosjean AG, Dgk, Althaus, REDA, ETHA, Baurechtsbau: 12, CH-8200 Kusnatten, T +41 71 672 2003, F +41 71 672 2104, info@grosjean.ch			